



# LEADER TIC Mini

Thermal imaging camera

## Small and efficient

Particularly suitable for the inside attack. The Mini offers unbeatable value and best quality, combined with all important Features, ideal for firefighting, inside attack, the search for missing persons and fire pockets.



### Outstanding features:

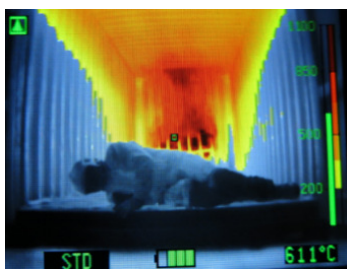
- **Compact** 155 x 120 x 85 mm
- Lightweight ~ 725gr avec with 1 battery.
- **Large 3,5" display** for details visibility
- -20°C to +1100°C
- **2 or 5 colorization mode**
- Image freeze
- Numerical hot-spot temperature
- 10 years warranty on batteries (**Best energy Concept**) 5000 charging cycle battery
- **4h running time** with 2 batteries
- **Possible continuous operation** by changing one battery during use (no need for turning off the camera)



## Colour schemes:

LEADER TIC Mini offers

- as standard 2 colour scheme: Fire, Search



**STD: Fire**

- Dark Red >900 °C
- Red > 650 °C
- Orange > 450 °C
- Yellow > 200 °C
- White = Hot
- Black = cold



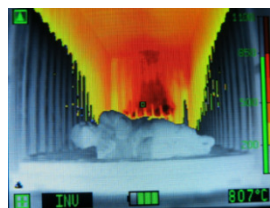
**SEARCH:**

2 hottest percent are coloured in Red and the 5 following hottest percent are in orange.

- as option +3 colour scheme: Cold Finder, Inverse, and Multicolour



**COLD Finder:**  
Blue colour for coldest areas



**INVERSE:**  
• White = Cold  
• Black = hot



**Multicolour:**  
For Industrial applications

### 3 Sensibility modes with automatic switch:

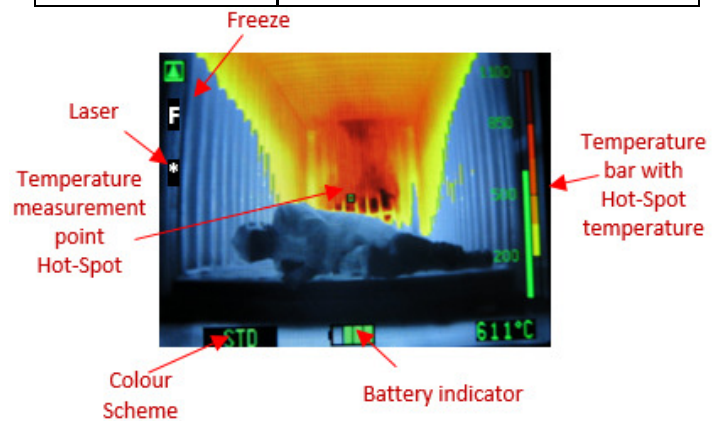
- High sensibility temperature range: -20 +150 °C
- Medium sensibility temperature range: -20 + 500 °C
- Low sensibility temperature range: -20 +1100 °C

**LEADER**  
Tomorrow's technology today

# Characteristics:

TIC Mini	320x240
Dimensions	155 x 120 x 85 mm
Weights	810gr with 2 batt / 725gr with 1 batt
Display	3,5" LCD / 76.800 Pixel
Frequency	60Hz Fps
T°C Range	-20° to +1100°C
Colorization	Std: Fire, Search, Option: Cold Finder, Inverse, and Multicolour
Casing	
Material / Colour	PUR / Elastomer
Drop Test	2m on concrete
IP	IP67 / 1 Meter 30 Minutes
Heat resistance	150°C for 12min / 260°C for 5min
Sensor	
Type	Amorphous Silicon aSi Resolution <b>384 x 288</b>
Spectral range	8 – 14 µm
T°C sensitivity	0,08°C
Optics	
Material	Germanium Carbon Coated
Focus	1m to infinity
Visual field / FOV	H: 59° V: 39° Diagonal: 74°

General	
Power supply	1 or 2 LiFePo <sub>4</sub> rechargeable batteries
Running time (20°C)	>4 Hours with 2 batteries >2 Hours with 1 battery
Boot time	< 5 seconds
Charging voltage	12 / 24 VDC or 230 VAC
Charging time	~ 1.5 hours with charging bay ~ 7 hours with main charger
Charging cycles	> 5000
Warranty	10 years warranty on batteries + Sensor
Options	
Laser pointer	3 Colour modes: Black-Hot, Multicolour and Cold finder
Zoom x2 x4	Zippers
Vehicle charging bay or main charger	Carrying cases (standard or storm case)



## Energy concept

LiFePO<sub>4</sub> batteries (lithium-iron-phosphate).

The redundant system allows to operate the camera with only one battery. This technics guarantees a continuous operation.



### Benefits:

- Very long lifespan guaranteed 5000 charging cycles (~10 years)
- Operating time (4h with 2 batteries at the same time in the camera)
- Simple opening and insert of the batteries

## Buttons / laser pointer mode

- Green:** ON/OFF (long > 2sec)  
Freeze or Zoom (short)
- Red:** Colour schemes selection (short)  
Opt.: laser pointer (> 3 sec)  
Automatic shutdown 30 sec

## Vehicle Charging Bay

Very space-saving mountable!  
A power supply 12/24 VDC or 230 VAC.  
Capacity to recharge up to 4 batteries at the same time (2 in the camera and 2 spares)



As part of our policy of constantly researching to improve our equipment, we reserve the right to change the characteristics of our apparatus at any time without prior notice.  
ZF.07.269.EN.7

