



# LEADER TIC M3

## Thermal imaging camera

### 3 button version

Offers a broad spectrum of uses in firefighting operations.

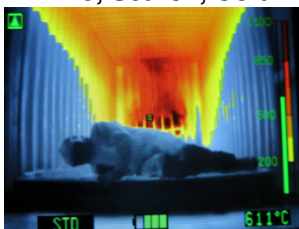


#### Outstanding features:

- Large 3,5" display for details visibility
- -20°C to +1100°C
- 5 colorization mode
- Fully integrated video recording (6 to 32h)
- 6.5h operating time (charging time of only 1h30)
- 5000 charging cycle battery
- Zoom x2 and x4
- Freeze frame
- Elastic rubber housing for superior mechanical resistance
- IP67

#### Colour schemes:

LEADER TIC M3: 5 colour schemes:  
Fire, Search, Cold Finder, Inverse and Multicolour



- STD: Fire**
- Dark Red >900°C
  - Red > 650°C
  - Orange > 450°C
  - Yellow > 200°C
  - White = Hot
  - Black = cold



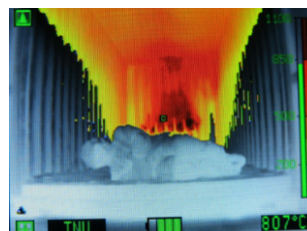
**COLD Finder:** Blue colour for coldest areas



**Multicolour:**  
For Industrial applications



**SEARCH:**  
2 hottest percent are coloured in Red and the 5 following hottest percent are in orange.



**INVERSE:**

- White = Cold
- Black = hot



#### 3 Sensibility modes with automatic switch:

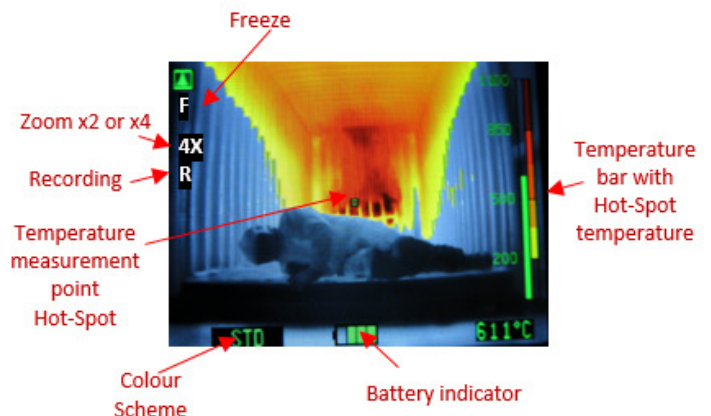
- High sensibility temperature range: -20 +150°C
- Medium sensibility temperature range: -20 + 500°C
- Low sensibility temperature range: -20 +1100°C

**LEADER**  
Tomorrow's technology today

# CHARACTERISTICS:

TIC M3	320 x 240
Dimensions	205 x 160 x 95 mm
Weight	1,4 kg
Display	3,5" LCD 76800 Pixel
FPS	60Hz
View / Colour Scheme	5 Colour scheme
T°C range	-20° to +1100°C
Zoom	x2 and x4
Casing	
Material / Colour	PUR / Elastomer
Drop Test	2m / concrete
IP	IP67 – 1m for 30 min
Heat resistance	150°C for 12min / 260°C for 5min
Sensor	
Type	Amorphous Silicon aSi – Resolution <b>384x288</b>
Spectral range	8 – 14 µm
T°C sensitivity	0,08°C
optics	
Material	Germanium Carbon Coated
Focus	1m to infinity
Visual field / FOV	Horizontal: 59° Vertical: 39° Diagonal: 71°

General	
Power supply	2 LiFePo <sub>4</sub> -rechargeable batteries
Operating time (20°C)	6.5h (5.5h when recording)
Boot time	~ 2 Seconds
Charging voltage	12 / 24 VDC or 230 VAC
Charging time	~ 1h30 with charging cable or single charging bay ~ 2h with double charging bay (2h20 for additional batteries)
Charging cycles	> 5000
Warranty	10 years warranty on batteries + Sensor
Options	
Zippers	Vehicle charging bay (220v or 12/24v)
Wireless transmission module	Carrying cases (standard or storm case)



## Batteries charging

Use only the supplied charger. Connect the charger to the power supply (230V). The LED on the power supply lights up GREEN. Connect the charge cable as shown with all 3 charging contacts of the camera. The batteries are charged automatically. The LED lights ORANGE. Charging is automatically terminated and the system goes into trickle mode



## Wireless video transmission (option)

The video from the camera will be wireless transmitted with an additional radio module in 2.4 GHz to a receiver, to display in on any monitor or laptop.



As part of our policy of constantly researching to improve our equipment, we reserve the right to change the characteristics of our apparatus at any time without prior notice.  
ZF.07.271.EN.3

